

**Human Encounters with Wolves and Cougars in the
Pacific Rim National Park Reserve Area:**
Summary and Analysis of Behaviour

Michelle Theberge
Wild Coast Project
PRNPR
March 2007

EXECUTIVE SUMMARY

Encounters with wolves and cougars have been documented in a Wildlife Database at Pacific Rim National Park Reserve (PRNPR) since 1984. In this report, I review all human-wolf and human-cougar encounters reported in and near PRNPR. A series of flowcharts were created to further categorize the wolf and cougar encounters with people and to help interpret carnivore behaviour. The human-cougar encounters fell under the following categories: 27 person encounters (with 7 subsequent behavioural categories); 7 pet encounters; and 13 place encounters. The human-wolf encounters fell under the following categories: 22 person encounters (with 7 subsequent behavioural categories); 27 pet encounters (5 categories); 12 vehicle or vessel encounters (2 categories); and 27 place encounters. Not all encounter records contained enough information for determining carnivore behaviour and were not used in the evaluation. Case histories of the encounters are included, and recommendations for gathering human-carnivore encounter information are given.

TABLE OF CONTENTS

Executive Summary	2
Table of contents	3
Introduction	4
Background	4
Methods & Results: Cougar	4
Flowchart (Figure 1)	7
Methods & Results: Wolf	8
Flowcharts (Figures 2, 3, 4)	10
Case History: Cougar	
Encounters with People 1	13
B, C, D Encounter Summary	18
Encounter with People 2	20
A, E, F, G, H Encounter Summary	23
Encounters / Pets	24
Summary	25
Encounters in High Use Areas	26
Summary	28
Case History: Wolf	
Encounters with People: campsites	29
A1, A2, A3 Summary	33
Encounters with People: outside	
Campsites	34
C, D, E, F Summary	36
Encounters with Pets	38
Summary	43
Encounters in High Use Areas	44
Encounters Vehicle / Vessel	47
Summary	49
Summary Conclusions	50
Recommendations	50
Literature Cited	52
Appendix	53

INTRODUCTION

Cougar and wolf observations have been increasing over the past two decades in and near Pacific Rim National Park Reserve. While the majority of these observations do not appear to pose a threat to human or wildlife safety, a small handful have ended in detrimental consequences for either the carnivore (e.g. destruction) or person (e.g. injury or death) involved. The objective of this report is to help minimize the risk of negative encounters between humans and cougars or wolves by trying to understand more about the behaviour of these animals during the encounter. In this study, I: 1) review all human-cougar and human-wolf encounters that have been recorded in PRNPR's Wildlife Database since 1984; and 2) further evaluate and re-categorize these reports in an attempt to help explain carnivore behaviours.

BACKGROUND

Records of wolf and cougar observations have been recorded in PRNPR's Wildlife Database since 1984. Various people, ranging from visitors to park staff, have collected these observations. The data are recorded on Wildlife Observation Sheets and later are entered into the database by members of the Warden Service and Resource Management team.

The data are organized into different categories falling under General Observations (General, Sign, Vessel, Anecdotal Data) and Encounters (People, Place, Vessel). For the purpose of this study, we are interested in the Encounter records.

An Encounter-Person occurs when there is an interaction between a person and a cougar or wolf (i.e. there is some sort of acknowledgement of both parties involved) usually at a distance closer than 30 metres. Differing from Encounters, General Observations occur when a person has a fleeting look at the animal.

An Encounter-Place occurs when the animal is in an area of high human presence or activity. There may not be a direct interaction between the person and the animal, but it seems that the animal is aware of being close to human activity. Generally, these situations occur in a town site or campground.

An Encounter-Vehicle or Vessel occurs when a person in a vehicle or vessel (i.e. motorboat, truck, kayak) interacts with an animal.

METHODS AND RESULTS: COUGAR

Original Cougar Encounter Data

Between 1984 and 2006, 516 cougar observations (sign, sightings and encounters) were recorded (note that the 2006 data are incomplete). The number of recorded cougar Encounters-People and Place each year in each Unit (BGIU: Broken Group Islands, LBU: Long Beach, WCTU: West Coast Trail) of PRNPR are displayed in Tables 1 and 2 respectively.

Table 1: The number of Encounters-People with cougars per year in the 3 units of PRNPR

Year	LBU	WCTU
1983	1	
1988	1	2
1989	1	1
1992	1	
1993		3
1994		1
1997	1	6
1999	2	8
2000	1	1
2001	1	
2002	1	14
2003	2	4
2004	1	1
2005	2	
2006	1	5
Total	16	46

Table 2: The number of Encounters-Place with cougars per year in the 3 units of PRNPR

Year	BGIU	LBU	WCTU
1985			1
1989		1	
1992		8	
1993		2	2
1994		1	
1996		1	
1997		1	13
1998		9	4
1999		3	4
2000			2
2002		3	6
2003	1	1	16
2004		11	5
2005		4	2
2006		1	
Total	1	46	55

All 516 records were reviewed, and 164 were categorized as Encounters (People: 62, Place: 102). For the purpose of this study, only Encounter-Place records that included a person or pet were included (26 out of 102). Many records in both categories did not include enough information in the database to draw conclusions about the encounter. Therefore, in total 48 encounters were evaluated for behaviour. A new category, Encounter-Pet, was also created to specify when encounters occurred between a domestic animal and a cougar.

A cougar behaviour flowchart (Figure 1) was designed as a way to interpret these data. The flowchart was then used to further categorize the encounter.

Re-evaluation of Cougar Encounters

The flowchart was used to assign each original encounter with a new Encounter Class (A to H) (Table 3). Refer to the Case History section for a description of the Encounter Classes. Each case is identified by a Wildlife Observation Number, date and location. Eleven of the records were changed from their Original Encounter Category (i.e. People or Place) to a new Encounter Class (Appendix A).

Table 3: The number of cougar encounters in each new Encounter Class

Encounter	New Encounter Class	Total
<i>People</i>	A	4
	B	4
	C	10
	D	4
	E	1
	F	1
	G	2
	H	2
<i>Pet</i>	P	7
<i>Place</i>	EP	13
<i>Other</i>	NEI	39
	Total	87

Cougar Flowchart

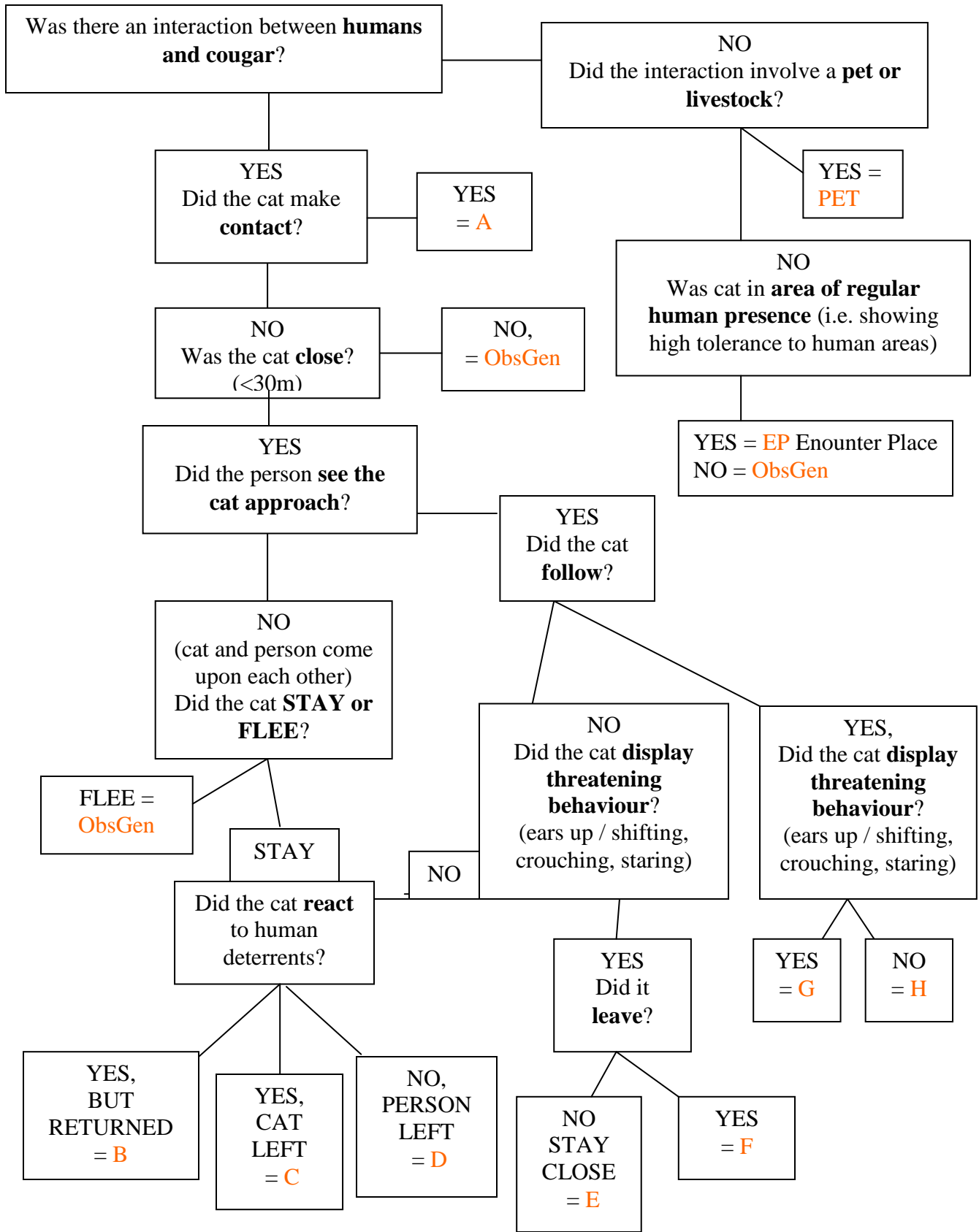


Figure 1: Human-Cougar Encounter Flowchart

METHODS AND RESULTS: WOLF

Original Wolf Encounter Data

Between 1984 and 2006, 835 wolf observations (sign, sightings and encounters) were recorded (note that the 2006 data are incomplete). The number of recorded wolf Encounters-People, Place and Vehicle/Vessel each year in each Unit (BGIU: Broken Group Islands, LBU: Long Beach, WCTU: West Coast Trail) of PRNPR are displayed in Tables 4, 5 and 6 respectively.

Table 4: The number of Encounters-People with wolves per year in the 3 units of PRNPR

Year	BGIU	LBU	WCTU
1983		1	
1997		1	
1999		12	
2000		18	
2001		3	
2002	1	8	
2003	4	3	
2004	16	1	
2005	2	1	3
2006	2	2	
Total	25	50	3

Table 5: The number of Encounters-Place with wolves per year in the 3 units of PRNPR

Year	BGIU	LBU	WCT
2000		4	
2001	1	2	
2002	1	4	
2003	3	3	
2004	3	1	
2005		2	2
2006	1		
Total	9	16	2

Table 6: The number of Encounters-Vehicle / Vessel with wolves per year in the 3 units of PRNPR

Year	BGIU	LBU
2002		2
2003	1	3
2004	1	1
2005	5	2
Total	7	8

All 835 records were reviewed and 120 were recorded as Encounters (People: 78, Place: 27, Vehicle/Vessel: 15). For the purpose of this study, several records were not included in the encounter evaluation due to: Not Enough Information (27); Not Applicable (5); and being re-categorized as General Observation (3). A new category, Encounter-Pet, was created to specify when encounters occurred between a domestic animal and a wolf (Appendix B).

A wolf behaviour flowchart (Figures 2, 3 and 4) was designed to reflect the information available in this data set, and was used to further evaluate these data.

Re-evaluation of Wolf Data

The flowchart was used to assign each original encounter with a new Encounter Class (Table 7). Refer to the Case History section for a description of the Encounter Classes. Each case is identified by a Wildlife Observation Number, date and location. Eleven of the records were changed from their original Encounter category (i.e. People, Place, Vehicle) to a new Encounter Class. Twenty-seven of the Encounter-People were re-evaluated as Encounter-Pet (see Appendix B for a list of changes).

Table 7: The number of wolf encounters in each new Encounter Class

Encounter	New Encounter Class	Total
<i>People</i>	A1	9
	A2	1
	A3	2
	C	2
	D	3
	E	1
<i>Pet</i>	F	4
	P1	6
	P2	2
	P3	13
	P4	4
<i>Place</i>	P5	2
<i>Place</i>	EP	27
<i>Vehicle/Vessel</i>	V1	3
	V2	9
<i>Other</i>	OG	3
	NA	5
	NEI	24
	Total	120

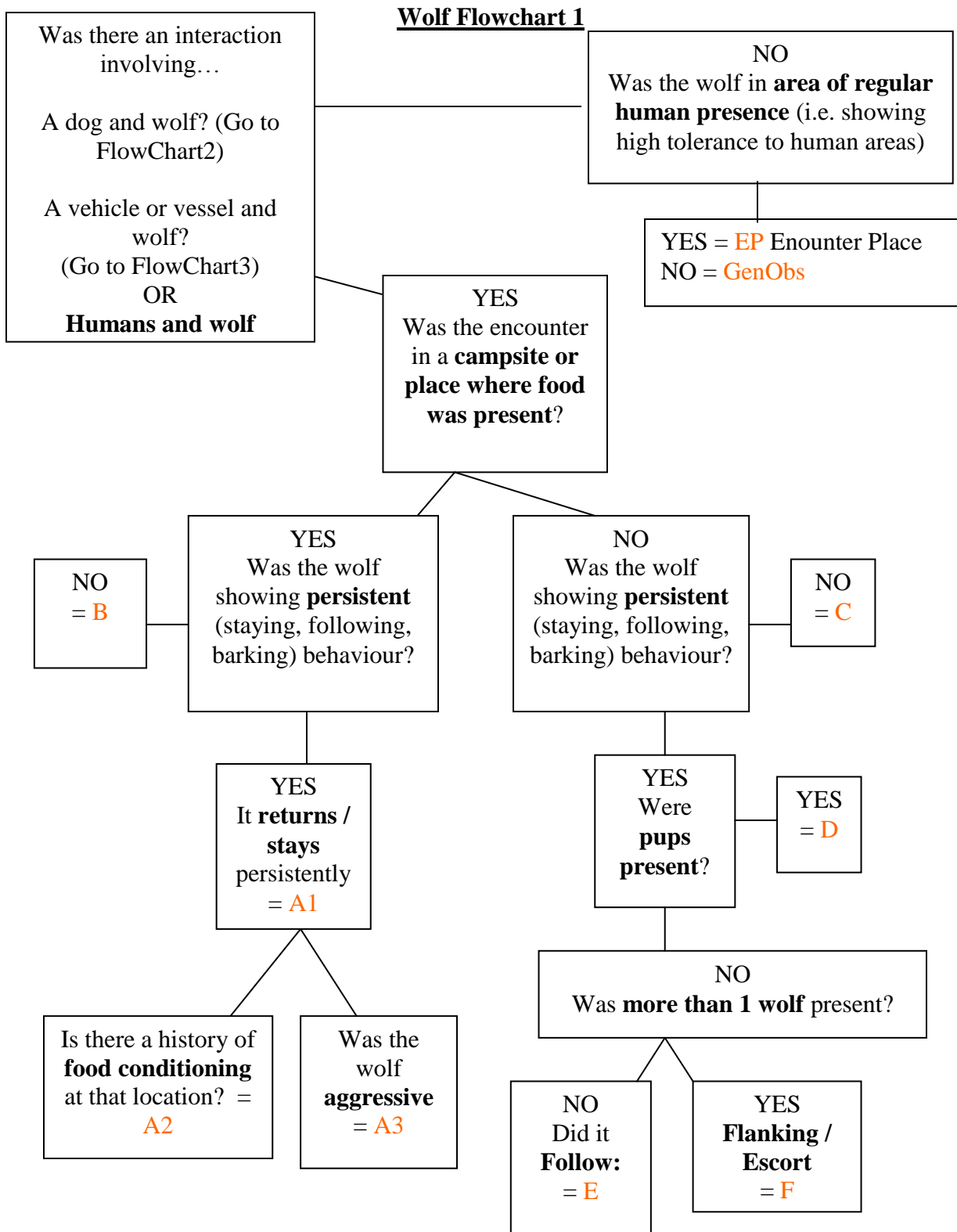


Figure 2: Human-Wolf Encounter Flowchart

Wolf Flowchart 2

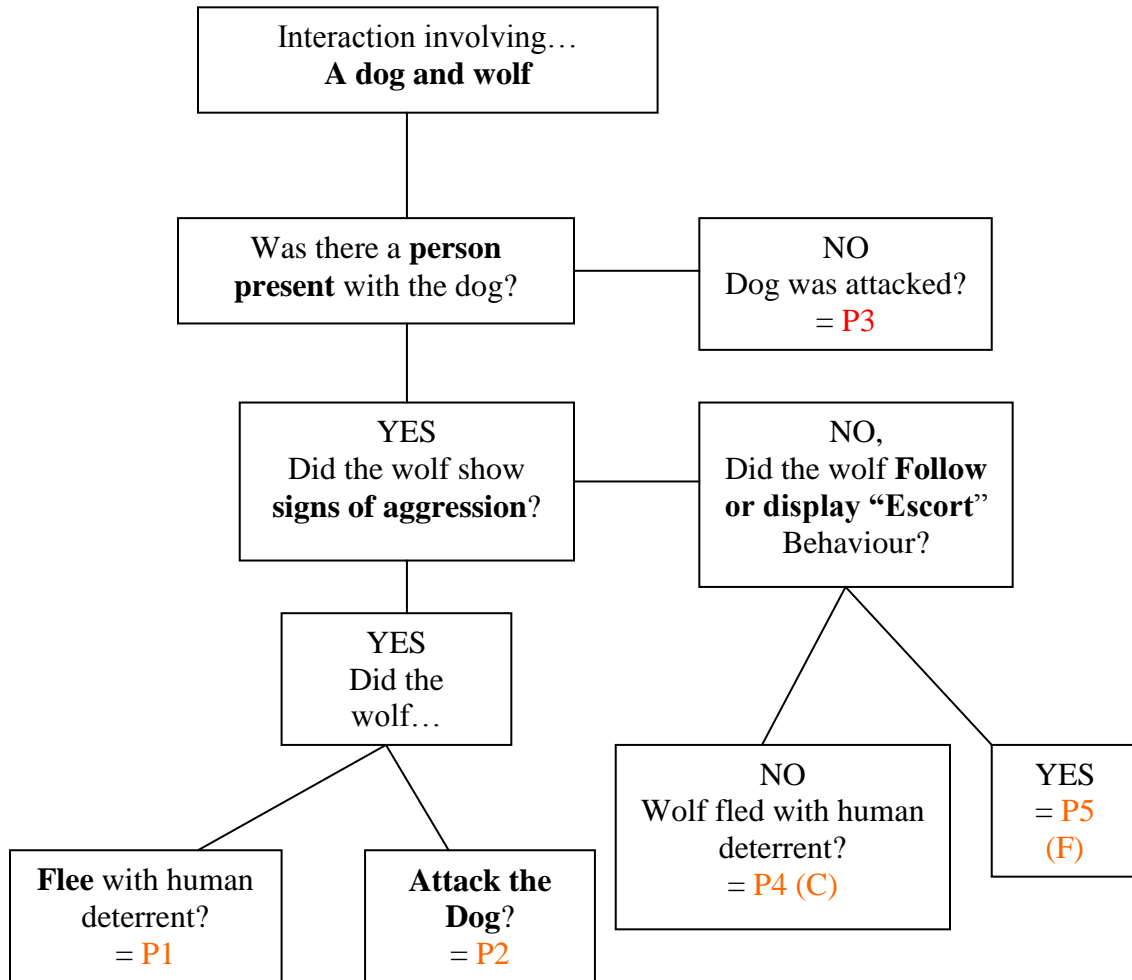


Figure 3: Pet-Wolf Encounter Flowchart

Wolf Flowchart 3

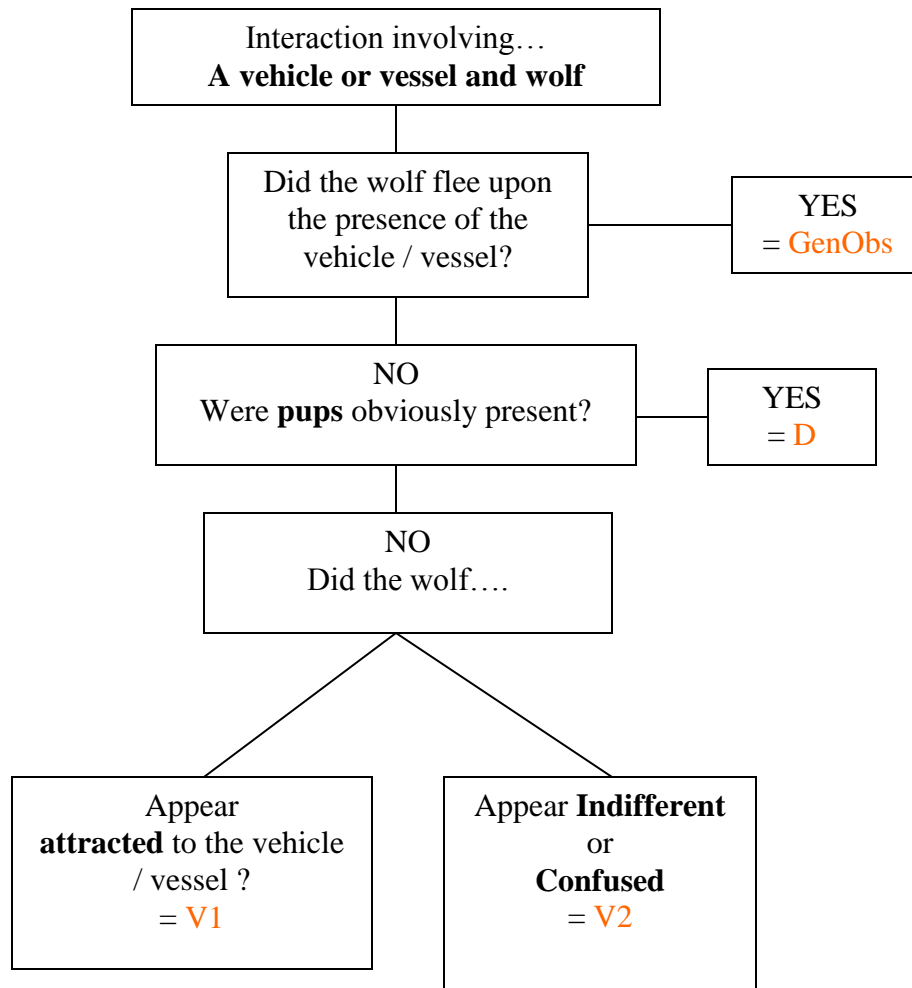


Figure 4: Vehicle / Vessel-Wolf Encounter Flowchart

CASE HISTORY: COUGAR

Cougar Encounters with People (B, C, D Encounters)

B – Encounter

- **Cat and humans come upon each other (i.e. humans may have approached cat); Cat close, stays in area; Yields to deterrents but returns**

6815 WCTU: Camper Bay campsite

June 27, 2003

A cougar was observed sleeping in the drift logs, across the creek from the main camping area up on top of the gravel and driftwood berm. Although the cougar was in plain view of the campers it was not watching people. It was grooming and sleeping. Two groups of hikers set up their tents within 30 metres of the cougar and did not notice it there. When they saw it they moved their tents back across the creek to the main campsite. Several people approached to within 5 meters to take pictures - the cougar did not change posture or move; it would close its eyes and then open them every minute or so. This occurred between 3 pm and 9 pm. At dusk the cougar got up and walked over to the south side of the pool, walked along side of the pool and went into the brush. It then appeared near the cable car platform on the south side and slowly walked up river until it disappeared. The cougar did not approach people, did not vocalize, and did not display any interest in people.

A hiker from California also reported the incident. He was dismayed by the behavior of the other hikers who had been approaching the cougar. He took some rocks and threw them at the cougar in an attempt to scare it away. Initially, he threw 4 rocks. The cat did not respond or get up from where he was laying. About 10 minutes later the cougar did get up and walked slowly away into the bush. It returned about 20 minutes later. The Californian then approached the cougar again and threw 8-10 more rocks at the cat. At one point the cat was about two meters away. The cougar moved slowly away into the bush and then up the river.

He observed that the cougar did not appear to be in good health. It had a facial injury around the lip; some scrape marks on its shoulder; some damage to its left shoulder; and there was a slight limp. It also appeared to be dirty and wet.

3861 WCTU: Bonilla Creek campsite

August 6, 2002

Several hikers saw a cougar about 6 metres away. The cougar did not flee until the hikers threw sticks at it. It returned and watched the hikers from 15 metres away.

3687 WCTU: Walbran campsite

May 6, 2002

While camped at Walbran, a couple encountered a cougar. The woman, who had been crouching close to the Walbran River, stood up and noticed a large cougar watching her from less than 5 metres away. As she rose, it moved off at a slow pace to the bushes on the south side of the river. Later that evening, at approximately 9:30 pm, the couple

was kneeling at their tent when they noticed a large pair of eyes in their headlamps watching them from a couple of metres away. As they rose and shouted at it, the large cat moved off at a quick pace. The cougar was about hip height.

18912 Outside LBU: Tofino

August 13, 2005

A couple came home late at 1 am and were just falling asleep when they heard a large animal moving around walking on their deck. The door and the deck were shaking. They yelled and locked the door of their flimsy cabin on pilings. Out the window of their bedroom was a two metre stump about one and a half metres away where they could see a cougar sitting in the moonlight. They yelled at the top of their lungs, played the stereo at maximum volume, and banged on the walls and doors of their cabin. There was no reaction from cat. Eventually, the cat moved around under the cabin and could be heard purring loudly. After about two hours the couple fell asleep. In the morning, there was no sign of the cat.

C - Encounter

- **Cat and humans come upon each other (i.e. humans may have approached cat); Cat stays close; leaves on own or with some deterrent**

18582 WCTU: Camper Bay

April 28, 2006

Two hikers encountered a cat around noon at Camper Bay. The cat was approximately 3 metres away and circled the hikers making an “rrr” sound. The people did not try to scare animal away it left on its own after about 3 minutes.

10055 Outside LBU: Upper Kennedy River near Clayoquot Plateau

July 2, 2005

A cougar was encountered by the West Coast Inland SAR rope team while they were conducting a training exercise at a cliff on the west side of the Upper Kennedy River. The area was accessed via an old logging road. One person was belaying a climber who had just rappelled down the cliff. The belayer was seated in a small clearing back about 10 meters from the lip of the cliff and was intent on managing the belay rope for the climber. He heard a twig snap behind to one side of him and turned towards the sound. He observed a cougar leaping away from him. His impression was that the cougar had leapt from a mostly bare rocky rise about 10 meters away. Since there were 5 team members on site talking and yelling instructions, there was little chance that the cat was unaware of their presence.

7442 Outside LBU: Kennedy Lake

August 4, 2003

A camper reported a cougar encounter at Swim Beach. He heard something in bush, turned around and saw a cougar head sticking out from bush off the access trail. They briefly held eye contact and he said softly, "Go away please". Then, in conversation level voice, he said, "go away - go away, now". Cougar reversed into bush.

6597 WCTU: Carmanah Light (km 44, bridge 81)

August 31, 2002

Two female hikers on trail from Carmanah Light encountered cougar at Bridge 81. The cougar, sitting crouched with tail down, was at the far end of bridge. The hikers were at the top of the platform on the east side approximately 20 metres away. The cougar was watching the first hiker and did not react to noise. The second hiker appeared and spoke at normal volume. The cougar moved off, paused, and watched them from bushes. When the hikers made more noise, waved their arms and started to walk away, the cougar moved off in the other opposite direction.

3778 WCTU: Cheewhat km 36

August 28, 2002

A WCT resident sighted a cougar 50 yards east of km 36 at Cheewhat at 2:45 pm. The animal was about 10 metres ahead traveling in the same direction towards the residence. The cougar moved very slowly off the pathway and then halted. After waiting

for a few minutes, the resident slowly advanced along the trail towards the animal. The cougar moved very slowly into the forest and halted less than 10 metres from the trail. It stared at the resident. The resident called the Warden Service using his handheld radio. When he began speaking the animal moved very slowly further into the forest (with little undergrowth). The cougar acted as though it had become thoroughly accustomed to encountering humans or being overtaken by people on the trails.

2572 WCTU: Sandstone Creek

March 25, 2002

A trailcrew member came around a corner in the trail and spotted cat about two metres away. The animal jumped when he came around corner but did not leave. The cat had been staring at another crew member with a chainsaw and who was about 20 metres down a slope. The second crew member started up the chainsaw and moved towards the cat, which then fled.

18971 WCTU: Camper Creek

August 14, 2006

At 10 pm, a person was crouched down brushing his teeth at the creek when he heard a noise behind him. He turned around and saw a cougar 1.5 metres away in the trees. When he turned on his light and the cougar ran off.

18964 WCTU: Cheewhat Beach km 36.5

July 21, 2006

A hiker encountered a cougar at dusk on the trail. The cougar was 10 to 20 metres away. He believes they both noticed each other at the same time. The cat stared at him and the hiker began to make noise and his wave arms. After one minute the cougar casually walked back into forest.

7464 Outside LBU: Mountain Road (back way to Mt. Ozzard)

August 4, 2003

A couple stopped and got out of their vehicle at a viewpoint that provides a view of Maggie Lake and out towards the Stopper Islets. There was a short rock face and ledge directly behind the viewpoint. The man, standing at the outer edge of the viewpoint, noticed a cougar that was directly behind the woman who was sitting on the hood of the truck. The cougar was lying on top of the rock ledge about 3-4 meters above and behind the woman. Its head was resting on a low stump. The man noticed its large sized head and its bright yellow eyes. The man yelled to the woman and both quickly got inside the truck. The cat did not respond to yelling or their movement. Once inside the vehicle, the couple watched the cat through the retracted sunroof. The cat opened its mouth very slightly but did not vocalize. After a minute the cat slowly got up and walked out of sight into the forest.

90 WCTU: Gordon River km 73

November 20, 1989

A hiker was on the WCT when a cougar jumped out on the trail less than 10 metres in front of him. The cat's ears were laid back on its head. The hiker detonated a

"bear flare" close to the animal. The cougar jumped back into the woods to a position behind a stump. The hiker waited a few minutes and then hiked through the area without further incident.

D – Encounter

- **Cat and humans come upon each other (i.e. humans may have approached cat); Cat stays close: Does not react to deterrent, person leaves**

9551 WCTU: Camper Bay campsite

August 29, 2004

At dusk, two hikers were on the trail between the food cache and tenting area when a cougar came out of the bushes and slowly crossed the trail about one metre behind them. One of the hikers saw only the side of the animal. The cougar did not make eye contact. As it walked, the cougar was in a crouching or stalking position making it less than a metre tall. Although the cougar may have been aware of them, it did not appear to take any notice. After a few minutes, the hikers returned to the area and started throwing rocks. At the time of encounter about 20 to 25 campers were present at Camper Bay.

6829 WCTU: Cullite, Adrenaline surge channel

June 7 2003

A member of the trail crew popped his head into the first cave approximately 30 metres south of Adrenaline Falls to find himself looking at a cougar within 5 meters. The cougar calmly looked back and appeared indifferent and unalarmed. The crewmember withdrew and ran back to be with the four other crew. The cougar then walked to the entrance of the cave and circled there, then went back into the cave. The crew continued to watch as a marten ran by the cave. The cougar ran out of the cave after it and both jumped into the surge channel.

3799 WCTU: Vancouver Point

September 29, 2002

At dusk, a solo hiker encountered a cougar for 10 seconds at 3 metres. The hiker made lots of noise and went out to the ocean away from the animal. The cougar stayed near the bushes at the top of the beach. For twenty minutes, the hiker yelled while the cougar watched him. When it got dark, the hiker back tracked to a beach access and ran to Walbran.

3796 WCTU: Km 59

September 15, 2002

A solo hiker noticed a cougar about 15 metres off in bushes. When it saw her, it "yowled" and would not move off. The hiker waited for 10 minutes before passing through on trail.

Summary B, C, D Encounters

In these cases, the person does not see the cat approach (in many scenarios, it is possible that the person and cat see each other at the same time). The cat stays close (less than 30 metres away) and does not flee on the initial account. In all encounters, the cat

appears relatively indifferent to the human presence, and no threatening behaviours (intense staring, crouching, ears or tail twitching) are reported.

In B – Encounters, despite the people’s initial attempts to deter it, the cat is persistent and eventually returns, showing no desire to leave. This behaviour is similar to the ‘Intentional Encounter’ category described by Deurbrouck & Miller (2001).

In C – Encounters, after seeing the people the cat eventually leaves on its own or with some human deterrent. It is aware of human presence and shows no desire to stay.

In D – Encounters, the cat shows no desire to leave and does not react to the person’s presence or deterrent. Eventually, the person leaves. Both C and D Encounters could be called ‘Intentional Encounters’ or ‘Incidental Sightings’ (Deurbrouck & Miller (2001). For the case of this analysis, most ‘Incidental Sightings’ are categorized as ‘General Observations’, however, C and D Encounters occur for either a longer duration and at closer distance.

Cougar Encounters with People: 2 (A, E, F G, H Encounters)

A - Encounter

- **Cat makes contact**

9594 Outside LBU: Clayoquot Sound, Ahousaht (Flores Island)

January 12, 1989

A 28 year old male from Ahousaht on Flores Island was gathering firewood when a cougar attacked him from behind. He struggled, broke free and the cat ran off. The man suffered bites and scratches. A few minutes later the cougar was shot.

9593 Outside LBU: Clayoquot Sound (Beach on southerly tip of Catface Mountain)

May 16 1988

A 9 year old boy was walking on a beach and became separated from uncle and 3 year old girl. His body was found badly mauled about the head. Paw prints indicated the cat had stalked him from behind. Boy had removed clothing before attack. He may have been swimming or hypothermic (from BC Ministry of Environment internal report, and Danz 1999; Beier 1991).

9589 WCTU: Darling River: Logjam

May 28, 1985

A party of 4 (3 women and a 12 year old boy) was camped at the Darling River. At 7 pm a cougar attacked the boy as he was playing along the river. The boy's mother and an aunt had sent the boy to the other side of a logjam to play while the women bathed. The boy screamed when a cougar grabbed his head with its jaws and proceeded to drag the boy up the stream bank.

The women bolted across the river and grabbed the boy. The cougar let go when the screaming women approached but did not leave. It was only 3 metres away, and then leapt from log to log close by. The women had the impression that the cat was anxious to continue its attack on the boy.

The women applied direct pressure to slow the bleeding. The boy was bleeding profusely from the head and throat, and there was air bubbling from a puncture wound in the neck. While they carried him to their tent, the cougar followed. They could hear the cougar pacing back and forth outside the tent for about one hour despite the presence of a fire that they had lit prior to the attack.

One of the women ran to Pachena Lighthouse and a rescue operation ensued that involved the Canadian Coast Guard and Navy, 442 Squadron and the US Navy. Some hours later, the boy was flown to Victoria hospital where he made a complete recovery. The cat was never found.

100 Outside LBU: Radar Hill Road

October 30, 1983

A man was attacked by a cougar. A passing car picked him up and took him to a home in Esowista. Tofino. No other details were available.

E - Encounter

- **Person sees cougar approach; Cat displays threatening behaviour (crouching, staring, ears and tail twitching); Persistent staying close**

6606 Cheewhat campsite (near dunes Km 37)

April 5, 2003

At 7 pm, a hiker was sitting in his forest camp at Cheewhat replacing corks on his boots when he noticed a movement off to one side. He looked and saw a cougar moving slowly towards him from the beach side of the campsite in a slightly crouched position. The cat would advance a step or two and then stop. The cat stared intently at the hiker the whole time. The cat approached to about 5 metres away. The hiker yelled at the cat, "Get out of here." The cat stopped and moved from its slightly crouched position to an erect, fully standing position. It turned and slowly walked back towards the forest edge and the beach but stopped about 8 metres away. The hiker then stood up and banged with his walking stick on a tree trunk. The cat resumed walking into the forest and out of sight. About 1 minute later the cougar began vocalizing - "yowling" and "screaming". The cat was still quite close. The hiker fired a bear flare in the direction of the cat. The flare went off with two loud bangs followed by a flare. The cat was not seen or heard again.

F - Encounter

- **Person sees cougar approach; Cat displays threatening behaviour (crouching, staring, ears and tail twitching); Cat leaves with deterrent**

94 WCTU: Klanawa km 21

August 2, 1988

A hiker walking alone encountered a cougar on the main trail. The cougar landed from a rock ledge or a tree above approximately 5 metres in front of the hiker. It stared him right in the eyes. When the hiker yelled, the cougar did not move. Estimated time of eye to eye contact was 30 seconds. The cougar eventually walked away from the hiker but then turned back to engage in another timely stare. Hiker was certain this was a large male.

G - Encounter

- **Person sees cougar approach; Cat follows person- persistent; Cat displays threatening behaviour (crouching, staring, ears and tail twitching)**

10155: Outside LBU: Grice Bay Main – Kennedy Flats near Km 14

Aug 17 2005

One evening, a mushroom picker was hiking up a 12 kilometre logging road back to his campsite at Redneck Beach. The picker noticed a large cougar following him on the logging road. For the next 20 minutes or so the cougar followed the picker at a

distance of about 25 metres. For the entire duration of the encounter the mushroom picker walked backwards so that he could keep the cougar in sight. He also yelled loudly, waved his arms continuously and occasionally hit the ground with a walking stick. His actions did not have any noticeable effect on the cougar. At times the cat appeared to crouch as it moved forward. The man kept to the center of the road while the cat kept closer to the edge of the road. The cat did not approach any closer than 25 meters but it also would not leave. It followed the man about 1.5 km before it disappeared. The picker continued his hike back to the campsite without any further sighting of the cat.

Other than the crouching there was not anything particular about the cat's ear position or any movement of the tail. The cat did not vocalize.

383 WCTU: Pachena Light km 8

August 30 1997

Lone female hiker heard animal running behind her on the trail. When she turned around, she saw cougar running towards her, which stopped about two meters away. She yelled but the cat did not respond. She began talking quietly to the cat and it sat down on trail. When she tried to back away around corner of trail, the cougar followed. The encounter lasted 20 minutes before she tried moving towards the cat. At that point, it left the trail and ran into forest.

H - Encounter

- **Person sees cougar approach; Cat follows person - persistent; Cat does not display threatening behaviour (crouching, staring, ears and tail twitching)**

2759 LBU: Willowbrae trail

October 27, 2001

At 5:30 pm, two mothers and two children (5 year old girl and 8 year old boy) were hiking back from Half Moon Bay. They were about 12-15 minutes from the parking lot when the boy turned around and noticed something standing underneath the bushes at the edge of the trail behind them. When he asked the mothers what it was they realized it was a cougar. The girl started yelling at the cougar. They all walked hurriedly together back to parking lot with the cougar following about 10 metres behind them keeping pace staying on the right side of the trail.

9581 Pachena Light km 5

August 30, 1997

A lone female hiker noticed a cougar beside the trail only about 1 metre from her. As she kept hiking the cat followed her. The hiker climbed up on a log and the cougar sat down on the trail. She then threw down her pack onto the trail and the cat sniffed it. Eventually, the hiker climbed a tree and stayed there about 20 minutes. When some other hikers came along the cougar moved off about 4 metres but then returned to the side of trail. The hiker and the group headed off and the cougar did not follow. The group observed fresh tracks and scats all the way to Pachena Bay. The hiker did not feel that

the cat's behaviour was threatening. This cat may have been the same one in Encounter 383.

Summary A, E, F, G, H Encounters

In each of these encounters, the cat appears interested in the person and approaches in very close proximity. The cougar actually makes contact in A Encounter, attacking the person. For each of these scenarios, there is not enough information available to evaluate the cougar's behaviour before the attack, and therefore it is difficult to determine the association between these attacks and the other behaviours listed below. An Encounter can be described as a 'Confrontation' (Deurbrouck & Miller, 2001). As noted by Deurbrouck & Miller, attacks did not result in death when an adult was involved (either as the victim or bystander).

In E and F Encounters, the cougar is intent, very close, and the person sees it approach. The cat does not follow but displays threatening behaviour. The cougar eventually leaves with deterrent in F – Encounter (an 'Intentional Encounter'). In E – Encounter, the cat is very persistent slowly moving towards the person in a crouched position staring intently. The cat does not leave without human deterrent. With this type of behaviour, Fitzhugh and Fjelline (1997) suggest that the cougar could be 'moving into attack position.' As described by Deurbrouck & Miller (2001), this is a 'Stalking' incident and could have escalated into a 'Confrontation.'

The cougar persistently follows the person in G and H. In G, the cougar displays threatening behaviour such as running at the person (a potential bluff charge) or moving towards them crouching. These scenarios are 'Confrontations' (Deurbrouck & Miller, 2001) or 'moving into attack position.' (Fitzhugh and Fjelline, 1997)

H – Encounter appears less serious since as the cat follows it does not display threatening behaviours. These scenarios are likely 'Intentional Encounters' where the cougar is either 'curious' or 'assessing the success of an attack' (Fitzhugh and Fjelline, 1997).

Cougar Encounters involving Domestic Animals

P – Encounter

- **Cat is in an area or behaves aggressively with domestic animals present**

10156 Outside LBU: Kennedy Lake Redneck Beach forestry campsite

August 19, 2005

This incident occurred two days following Wildlife Observation #10155 (G-Encounter). The mushroom picker and many of the other campers were up and partying around 1am. Several people were sitting outside a motorhome around a fire and there was fairly loud music playing. A large cat (a bit taller than a German Sheppard and a bit longer body with a long tail) jumped into view and grabbed a very small dog (small breed, 0.5 metres tall, 0.5 metres long). The cat then turned and leapt out of view, up a trail and across the road. A pitbull dog chased it and there were sounds of a fight. Both dogs returned. The small dog had a couple of puncture wounds on either side of its body, and the pitbull was uninjured. The cat did not reappear.

6608 WCTU: Carmanah Lighthouse

April 11, 2003

In the afternoon, a cougar was spotted moving between the chain link enclosure and the greenhouse. The cougar was a medium brown in colour, appeared full grown and seemed quite thin. It was in a crouched, hunting type posture and was moving well and stealthily. It appeared fixated on a group of domestic chickens. Repeated slamming of a door did not affect the cougar. It did not glance in the direction of the noise but remained fixed on the chickens.

One of the lightkeepers fired one shot from a .22LR caliber rifle into the ground in a direction away from the cougar but the shot had no effect on it. The cougar did not look up and continued creeping forward past the greenhouse to the cold frame. Two more shots were fired into the ground. The cougar briefly looked up (one or two seconds) then returned to its previous hunting posture. Seven more shots were fired into the ground in rapid succession. The cougar then ran back into the trees behind the chain link enclosure.

Believing the cougar would return the domestic chickens were rounded up and locked in their enclosure. During this procedure the cougar did return. While the 2 lightkeepers were at the coop, the cougar was near an elevated stump behind the coop, about 5 metres away. It was spotted by the lightkeeper's son who was in the house. He alerted the adults who could not see the cougar. The cougar retreated into the forest and was seen passing a gap in the trees off to one side of the house.

After the cougar left, they realized that one of the chickens was missing. The remains of the chicken were found on a game trail about 25 metres from the chicken coop. It appears that the cougar had captured and consumed one chicken and was seen when it was trying for a second chicken.

6598 WCTU: Carmanah lighthouse

Aug 31, 2003

A cougar reappeared at the chicken coop intent on getting two chickens inside. It stood on its hind legs and clawed at the wire two metres off the ground, rattling the cage. When yelled at it circled around the other side of the cage. Two banger shots were fired from the scare pistol, which sent the animal running off into the bushes.

9735 Outside WCTU: Bamfield town site, east side (467 Pachena Rd.)

Feb 12, 2003

There were reports that a cougar was hanging around the community for about three weeks. One dog and two cats were killed in town. The dog that was killed was taken to the local vet, which confirmed that a cougar killed it since it was disemboweled. COM reports that the cougar has also been urinating under pilings and scratching pilings underneath cabins.

9726 Outside LBU: Clayoquot Sound, Hotsprings Cove

August 6, 2002

A cougar followed a young girl from one end of the reserve to another until someone with a dog came out. The dog was attacked and the owner had to kick cougar three times before cougar left. The cougar was shot and killed a short time later while in the reserve. The cat was a female. The teeth were well worn and the cougar was very skinny.

9580 WCTU: Carmanah Beach

Sept 9, 1999

Two cougars were reported chasing two dogs through the kitchen of the Knighton establishment. There have been several reports of these cougars in the area and wardens haze the animals.

2370 LBU: Rainforest trail A

Dec 24, 1997

Group of 3 hikers and an unleashed black lab dog were hiking on the trail. The dog was ahead of the group and out of their sight. The hikers came across the dog face to face with a cougar by the creek. The cougar made a short pounce toward the dog. The hikers threw a stick at the cougar, and it ran off across the creek and out of sight. The dog, unhurt but shaken up, was carried back to their vehicle.

Summary P- Encounter

When pets are in the vicinity, cougars appear to be more intent on them than the people.

Cougar Encounters in High Human-Use Areas

EP – Encounter

- **Cat is in an area of regular high human activity and is showing a high degree of tolerance to human areas.**

15590, LBU: Greenpoint Campground site 68

July 23, 2005

It was night when a father and two daughters were camping in their tent. They noticed the fire had flared up, and saw a silhouette of the hind end of a cougar as it passed between their tent and the fire. Three to four seconds later, it turned around and passed by again – this time they saw the full animal profile with a small round head, a long body, and a long tail. They couldn't hear anything. The family just lay back down and was silent in tent.

8946 WCTU: Walbran campsite

August 9, 2004

A hiker was sleeping near a fire on the beach. He awoke at 2 am and noticed a cougar lying on a log about 20 meters away. Its paws were in front and it appeared to be resting and not aggressive. When the hiker moved the cougar looked over at him. After 10 or 15 minutes the cougar got up and walked away into the forest. There were approximately 5 tents at the site.

7741: Outside LBU: Ittatsoo

April 18, 2004

A man was walking home when he heard an animal less than 10 metres away. He saw that it was a cougar when its head and one foot was illuminated by the streetlight. The head was lowered. The person backed away and left.

8288: Outside LBU: Tofino, Tonquin Park area

July 25, 2004

A cat was sighted standing just outside the window of a ground floor suite. It was about 1.5 meters away from the house on patio path. It was standing sideways to a woman in the window at first. When woman moved closer to the window the cat turned and saw her, making eye contact. The cat just stared for a few seconds and then walked away slowly into forest. The posture of the animal looked relaxed at all times. The animal appeared fit and healthy.

9110 Outside LBU: Tofino Botanical Gardens

September 20, 2004

Four people were inside a staff accommodation cabin. They were talking and playing fairly loud music when a cat walked across deck very close to the glass door. The cat was clearly visible by the people inside. The cat did not stop, look into cabin or show any reaction.

9112 Outside LBU: Tofino

September 20, 2004

A healthy looking adult sized cougar appeared from behind a playhouse at back of a yard. It walked across the yard in the open but stopped near a bush at the back. The cougar paused when the people spoke but then carried on.

9113 Outside LBU: Tofino Arnet Lane

September 24, 2004

A cougar was seen lying on a sundeck in the sun in front of a house. It appeared to be healthy. The cougar stretched and yawned while lounging just under a tree. The house owner did not know if the cat saw him. When he went upstairs to get camera the cat was gone on return.

6801 WCTU: Thrasher campground

June 15, 2003

A woman was heading towards the outhouse when she saw a cougar about 10 metres away close to the beach access. The cougar did not seem to be aware of her presence and walked slowly down the drift logs. The cougar walked back into the woods and came out at the end of Thrasher Bay where a dead sea lion was present (approximately 9 days old). Six people were on the beach during the sighting, and the cougar did not approach or appear to notice their presence. The reporting woman was closest and all others were approximately 30 metres away.

7454 BGIU: St Innes in Loudon Channel

July 2 2003

Overnight, cougar tracks were left between 10 and 20 metres from a campsite behind the tents.

3874 WCTU: Km 65 on shelf

August 25, 2002

A cougar was heard making hissing noises walking around a tent site. The animal was reported in the area from 9:30 to 12:30 pm about every half hour. The campers presumed the animal was about 5 to 10 metres away.

2568 WCTU: Cheewhat cabin

October 1, 2002

When the resident stepped out on his porch, he flicked a lighter and saw a cougar about 1 metre away from him. The cougar jumped away. The resident fired a bear cracker and the animal was not seen.

343 WCTU: Michigan Creek

June 27, 1993

A cougar was sighted at night walking through the campsite and between the tents.

290 WCTU: Michigan Creek

Aug 1 1993

A cougar was observed sitting on the bridge over Michigan Creek. It was reported to “meow”. The animal showed no aggression towards hikers. In the morning, tracks were observed around the tents.

Summary EP- Behaviour

Cougars have been observed in areas of regular high human activity and show a high degree of tolerance. These cougars seem to be easily deterred and indifferent to human presence.

CASE EXAMPLES: WOLF

Wolf Encounters with People in Campsites (A Encounters)

A Encounter

- **Encounter occurs in a campsite; wolf shows persistent behaviour (staying, following, barking); wolf returns or stays persistently**

7995 BGIU: Gibraltar Island

May 28, 2004

A commercial kayaking group was eating lunch on Gibraltar Island when a wolf came out of the bush and watched them. The guide attempted to haze the animal by yelling and throwing rocks. The wolf went into the bush and come right back out. While the group stayed on beach to eat, the wolf came out and lay down on beach for approximately one hour about 20 metres away. Eventually the group left the island.

9603 / 9604 BGIU: Gibraltar Island campground

October 3-4, 2004

As he sat cooking supper, a kayaker was approached from behind by a single wolf. He described the wolf as very small and thin looking. The wolf was within 1 metre when he first noticed it. The kayaker yelled, hollered and waved his arms. The wolf pulled back a ways but would not leave, at one point just lying down despite attempts to scare it off. Finally, the kayaker ran at the wolf and threatened it with a stick. The wolf left the clearing but the kayaker felt it was in the forest just out of sight.

The next morning, the wolf returned. Once again, the kayaker tried to deter the wolf by yelling and waving but the wolf did not retreat until the kayaker ran at it with a stick.

2639 Outside LBU: Vargas Island

June 17, 2000

A wolf was seen investigating several kayaks around a campsite on Vargas Island. It did not obtain any food or garbage. The kayakers repeatedly attempted to scare the wolf off but it would just drop back a ways and then return. A guide hit wolf with a steel ball bearing from a slingshot at about 5 metres causing the wolf to drop back briefly. After about 10 minutes, the guide and another kayaker eventually were able to chase the wolf off.

2635 Outside LBU: Vargas Island

June 25, 2000

A group of 12 kayakers were camped on the island. Around 3 am a wolf approached and came right into the camp area. A kayaker screamed that a wolf was in the tent vestibule. The 12 kayakers tried to scare the wolf away but it kept returning. The encounter lasted for 5 hours.

2636 Outside LBU: Vargas Island

June 26, 2000

It was after dark when a person encountered a wolf on a trail that went to a pit privy in forest. The wolf approached less than 10 metres. The wolf was scared off with difficulty, and the encounter lasted about one minute.

6594 Outside LBU: Clayoquot Sound, Chetarpe Beach - Catface

July 3, 2000

A commercial kayaking guide had camped the night on the beach and got up at 5:30 am. He saw a wolf sniffing around the edge of a tent. He quietly tried to move the wolf out of the campsite by throwing sticks while walking towards it. The wolf reluctantly moved away. The guide kept pushing the wolf right down to the end of the beach until it went into forest. When the guide started walking back, he looked over his shoulder to see the wolf following him. Yelling at the wolf, he tried to chase off again. The wolf moved parallel to the forest edge but wouldn't leave the beach. After about 15 minutes he threw a stick about 10 metres, which hit the wolf, and finally succeeded in chasing the wolf off. On returning to the campsite, the guide noted tracks around all the tents. The wolf had not checked out the fire pit nor the food stored in baja bags in the drift logs. It turned out that another camper had gotten up just before the guide, seen the wolf, but returned to his tent unsure of what to do.

6595 Outside LBU: Clayoquot Sound, Whitesand Beach – Flores Island

August 15, 2000

After taking the water taxi, two campers camped at Whitesands Beach. The following morning they awoke around 6 am to see a wolf in the vestibule of their tent. They yelled and scared the wolf off initially, but a short while later a wolf was in camp again. For 45 minutes they tried everything a kayak guide earlier had suggested. Eventually, they did succeed, but it is not known what finally worked. They did not have any food in their tent, and the wolf did obtain any food from their campsite. Later that day, they took the first available boat back to Tofino.

6861 BGIU: Clarke Island campground

July 10, 2003

At night, two campers (a boy and a girl) walked to the outhouse. While the girl was in the outhouse, the boy waited at the end of a gangway to the washrooms. The boy heard animals padding along path towards the building. He turned on his flashlight and noted two wolves that stopped and stared at him. The wolves were at the outhouse sign on trail 15 metres from the gangway, crouched down. The wolves did not vocalize nor bare their teeth. They stayed side by side. When the boy would shine the light on them they would cock their heads to the side. When the girl exited the outhouse, the campers then retreated to the eastern cubicle and locked themselves in. Periodically over the next hour they would shine their light and peer over the top of the door. One wolf stayed at the original position on the trail, and the other moved and stationed itself about 5 metres away in the thick underbrush. The encounter continued until 2 am.

In the outhouse, the campers were silent. Eventually, the two campers walked back to edge of gangway. The boy broke a branch off a tree and struck a hard plastic

float hanging from the tree. He shouted for his dad, “Dad, dad, there are wolves here and they won't let us by.” The father immediately replied and shouted, “Hey, hey - get away.” The wolves ran north to the tents then east. The father grabbed an axe and accompanied the girl to her tent. On the way to the boy's tent, they observed a single wolf crouched and slinking away 5 metres south of the tent. The father informed the other family camping there of the situation. No other incidents occurred that night.

A2 Encounter

- Same as above, but wolf is observed taking food or clothing

7996 BGIU: Gibraltar Island campground

May 29-30, 2004

On the afternoon of the 29th, two kayakers arrived on the beach, and a wolf came out of the woods 30 metres away. The kayakers tried to haze off the animal by yelling and throwing rocks. The animal did not react. That night camping gear (footwear and stove line) was taken out of a vestibule and chewed up.

On the morning of the 30th, the kayakers left, and a park warden visited the site. He saw a wolf approximately 10 metres away watching from the treeline. He fired 3 cracker shells to scare the wolf into bush.

Later that morning, the park warden returned, built a fire and waited. While looking down, a wolf approached from behind him, opened a food cooler, and grabbed a mustard container. The food cooler was only 2 metres from where the warden was sitting. When the warden yelled at the wolf, it dropped the mustard as it was running away. Fifteen metres away, it stopped and stared at the warden. With a previous decision made to dispatch the animal, the warden took aim and attempted to call (coax) it out of the bush. The wolf came out of bush and walked towards mustard. As it stretched to grab the mustard, the animal was instantaneously destroyed with one shotgun slug.

A3 Encounter

- Same as above, but wolf acts aggressively and makes contact with the person

2637 Outside LBU: Vargas Island

July 2, 2000

The following account was taken from McNay (2002). A wildlife photographer arrived on Vargas Island by kayak. Earlier that day, her companion had arrived there to witness two people nearby feeding a female wolf. When the photographer arrived, she was approach by a female wolf. The photographer crouched to take photographs, and the wolf walked directly toward her sniffing at the camera lens. The photographer held out her closed hand; the wolf sniffed and gently bit with its teeth, apparently testing to see if the woman was holding food. When the wolf found no food, it licked the photographer's hand. Later a male wolf joined the female. He was more assertive and rapidly

approached, nipping at a tear in the knee of the photographer's pants and at her bare toes that were sticking out of her sandals, but his biting motions were inhibited.

The two people camped near the beach for two days and the wolves remained in the area. The female wolf slept near their tents. The wolves attempted to steal articles of clothing and camping gear but did not obtain food. The photographer reported that the female wolf would pull water jugs from beneath a log, playfully push them around, and would also crouch in front of her and then run in a circle and crouch again, as if soliciting a play or chase response. Late on the second day, the pair of wolves became more persistent in their approach. Finally, the male approached directly toward the 2 people with his head lowered as the female wolf circled behind. The people interpreted that behavior as more threatening than earlier approaches, and they backed up the beach side by side. After a few minutes, they were able to drive the wolves away by throwing rocks.

The next morning the people left the island. The photographer later reported that other people in the area told her that the wolves had been hand-fed the year before as pups, and that they had been thoroughly habituated to people during several encounters that involved both feeding and play.

6593 Outside LBU: Vargas Island

July 1, 2000

A group of 18 people camped on Vargas Island. Most slept in tents, but two men laid their sleeping bags in the open near a campfire ring. One of the campers near the fire awakened at 1:30 am to find a wolf sitting on the end of his sleeping bag. The startled camper yelled, but the wolf did not move. Another camper in a nearby tent heard the shouts and discharged a noisemaker that scared the wolf away. The man who had encountered the wolf moved into a tent, but the second camper remained outside and was awakened by a wolf pulling on his sleeping bag about 2 am. The wolf dragged the man a few metres but released its grip and took a step backward when the man awakened and shouted. The wolf then moved forward, attacking the man's upper body that was still encased in the sleeping bag. Again the man shouted, attempted to fend the wolf off with his arms, and began rolling back toward the fire pit, but the wolf attacked the back of the man's head inflicting serious lacerations and lifting part of the victim's scalp. Eventually, fellow campers emerged from their tents and drove the wolf away. The victim estimated the attack lasted for about 5 minutes. He was transported to a hospital in Victoria BC where he was treated for injuries to his scalp, back and hands. It required more than 50 stitches to close the wounds in his scalp.

Early the next morning conservation officers killed two wolves near the campsite, a young male weighing 37 kg and a young female weighing 29 kg. Both wolves were in good condition and tested negative for rabies. The gastrointestinal tracts of both wolves contained remains of ungulate prey but no evidence of human food or garbage. Reproductive organs in both wolves appeared to be immature, suggesting the animals were approximately 14 months of age at the time of the attack.

The wolves that were killed near the encounter site were later identified as the same wolves that had interacted with people in various locations on Vargas Island.

Summary Behaviour A1, A2, A3

In all these cases, the encounter occurs in a campsite or area where food is usually present. The wolf shows very persistent behaviour by constantly returning or just staying when people attempt to scare it away. McNay (2002) describes encounters similar to A1 and A2 as “Investigative Searches” where, “wolves either curiously walked toward people or searched/scavenged in human-use areas such as campgrounds or remote campsites.” In A3, the encounter escalates as the wolf makes contact with the person. McNay (2002) suggests that the wolf is displaying “agonistic” behaviour where “aggressive wolf behaviours reflect an agonistic response to a human action that the wolf perceive as threatening, annoying or unexpected.” Such behaviour can occur in wolves habituated to people often as a result of food conditioning. For these types of encounters, the history of food conditioning in the area needs to be considered. It is likely that the wolves in the A Encounters were all displaying food conditioned behaviour.

Encounters with Wolves Outside Campsites (C, D, E, F Encounters)

C Encounter

- Encounter is **not in campsite**; wolf is not showing **persistent behaviour**

3733 LBU: Mallard Lake

October 16, 2002

A couple saw a large wolf on the south shore of the lake about 300 metres away. The woman yelled loudly, and the wolf initially moved away a couple of metres. Then wolf turned around and started around the lakeshore towards the couple at a steady pace. It seemed focused on them. When the wolf was about 100 metres away and still approaching them, the couple backed away from shore and retreated up trail. They did not see wolf again.

3720 LBU: Grice Bay Road – 1 km past junction

August 29, 2002

Three joggers encountered a small wolf on the Grice Bay Road. The wolf walked out onto the road 10 metres in front of them, stopped and stared. When the joggers yelled and waved their arms, the wolf walked slowly into the ditch and stopped again. One of the joggers picked up some rocks and threw them at the wolf. The wolf walked into the bush.

D Encounter

- Encounter is **not in campsite**; wolf shows **persistent** behaviour; **pups** are present

9120 Outside LBU: Clayoquot Sound – Streetley's Cabin

August 28, 2004

A man was collecting his oyster seed from the mudflats when he spotted 4 wolves (an adult with pups) traveling along the shoreline nearby. The adult took the pups to bush and left them there. It then returned and climbed up on Cathy's Rock where it barked and howled at the man for about one hour until he finished his work and left. The wolf was about 60 metres away.

6862 BGIU: Gibraltar Island

July 13, 2003

A kayak guide and two other kayakers were paddling northeast past Gibraltar lagoon when they saw an adult wolf on shore. Upon approach to 50 metres, the adult disappeared into the trees. They then observed a large pup on shore and watched the pup for two minutes until it disappeared into the bushes. Fifty metres away another larger pup appeared. Three more pups showed up on shore and the group watched them for about 4 minutes. Fifty metres behind the kayaks a large adult wolf appeared and started

to bark running along the shore until kayaks retreated. As the group headed towards Gibraltar campsite paralleling the shoreline, the adult wolf followed them on shore. The wolf stopped and disappeared from view when it was about 150 meters from the campsite. The encounter lasted about 10 minutes.

E Encounter

- **Encounter is not in campsite; wolf shows persistent behaviour; follows the person**

10205 WCTU: Pachena Light (Km 9)

August 3, 2005

A wolf followed hikers for approximately two kilometres. The group stopped and the wolf went into the forest. When the hikers resumed hiking the wolf continued to follow within 10 metres. Over 20 minutes, this scenario occurred 5 or 6 times. The wolf was finally deterred by camera flash.

18056 WCTU: Adrenaline Creek Km 55

September 20, 2005

A hiker on the trail turned around to see a wolf following his girlfriend. When the two hikers yelled, the wolf looked at them and slowly walked away.

F Encounter

- **Encounter is not in campsite; wolf shows persistent behaviour; more than one wolf is present; displays "flanking" or "escort" behaviour**

6591 LBU: Long Beach

October 13, 1999

At 6:30 am, a man was walking on the beach when two large wolves approached him from the south and halted about 150 meters from me. The tide was low and he was about 200 meters from the woods. One wolf circled him on the landward side and approached exactly opposite the first wolf. They both halted roughly 100 meters from the man in a perfectly straight line from the one wolf, through him, to the other. The wolves remained like this for about two minutes before the second wolf turned and proceeded north up the beach. The man began to walk towards the first wolf but it turned and headed south. A minute or so later a third wolf, several hundred meters off, came out of the woods and joined the first wolf. The entire encounter lasted about 5 minutes. The man noted that the beach was covered with large wolf tracks.

2601 LBU: Wickaninnish Southbeach

February 3, 1999

Around 5 pm, a woman was walking on the beach between the Wickaninnish Center and Combers Beach. At the first part of the dunes she observed several eagles and

a wolf close to an eagle. She saw the head of an animal peaking over the dunes about 5 metres away. About 4 to 6 wolves came out of the dunes onto the beach and surrounded her at about 3 metres distance. As the woman started walking back towards the Wick the wolves were beside her. At some point there was a wolf on either side of her, within two meters at times, and several behind. The woman avoided eye contact keeping her gaze downward at the beach. At the same time she carefully moved her fanny pack around to her front so that she could access her bear spray. When she managed to get out the spray and turned to use it, the wolves had broken off. They were about one meter behind her and were traveling towards Combers. The woman continued on towards the closest Wickaninnish parking lot. Suddenly the wolves were back around her. This time though they broke off after just a few minutes. The woman just kept walking straight ahead with her head down. When she did look back after a short while the wolves were gone from view. She looked through binoculars from the Wick center until dark, searching the beach for wolves. The only other people on the beach were a couple with a dog at dark. The wolves had appeared completely unafraid. There was no obvious aggression or threat, but they came within one metre at times.

2595 LBU: Goldmine Trail

February 3, 1999

A couple that was walking down the beach met with the woman who had been “escorted” by wolves in the previous case. On their way back to the Goldmine parking lot, about 200 metres from the parking lot where the forest is dense second growth they noticed two wolves. The wolves were moving stealthily parallel to them. The wolves were about 3 metres away on each side and just inside the forest edge. When they looked behind them they noticed a third wolf. They did not try to scare the wolves away. Shortly after, all three wolves moved out of sight into the forest.

2602 LBU: Wickaninnish Southbeach

July 9, 1997

At 10 pm, a woman was walking alone on Wick beach. She was about 20 minutes west of the Wick Center when she saw two wolves in the drift logs. She noticed them and they seemed to notice her at the same time. She walked back towards the Wick Center and they followed. One wolf stayed near the drift logs while the other walked behind her on the beach. Both were about 50 metres behind the woman. One wolf barked and howled (undulating) off and on for about 15 minutes. This wolf seemed to become increasingly agitated and would pick up its pace for 3 to 5 metres as it vocalized. The wolves continued to follow the woman in the same manner. They never came closer than 20 metres but maintained their flanking positions throughout. When the woman got close to the parking lot the wolves disappeared into the darkness.

Summary Encounters: C, D, E, F

These encounters did not occur in a campsite or areas with a history of food conditioned animals. In C-Encounter, the wolf approaches the people, perhaps out of curiosity, but does not stay. McNay (2002) suggests that such encounters could be called

“Investigative Approaches” which can result when wolves were unable to identify people or misidentified them as potential prey from long distances.

In D-Encounter, the wolf shows persistent behaviour (barking and staying but not approaching) and pups were present. This type of behaviour is likely “Self-Defense” (McNay 2002).

Only one wolf is present in E-Encounter and it shows persistent behaviour by following the person. Two to three wolves are present in F-Encounter where the wolves display “escort” or “flanking” behaviour by following or pacing alongside people at close range. McNay (2002) suggests that this type of behaviour is called an “Investigative Search.” Although unnerving to the person, the wolves do not display aggressive behaviour.

Encounter occurs with Domestic Animals
(P1, P2, P3, P4, P5 Encounters)

P1 Behaviour

- **Person present with pet; wolf shows aggression; person / dog leaves**

9114 BGIU: Reeks Island (Nettle)

April 11, 2004

A couple and their small dog accessed a small beach on the southwest side of Reeks by boat. They walked a short distance along beach with the dog off leash. The man mentioned to his wife that he thought he heard an animal traveling parallel to them, just inside the forest but they could not see an animal. The people spotted a small trail into the bush that might take them over to the Swale Rock side of Reeks Island. The woman stepped up onto the drift logs and looked up the trail. The wolf was sitting on the trail about two metres away. The wolf curled its top lip exposing his teeth. The woman turned and ran away up the beach. When the man stepped forward to have a look the wolf stood up and took two steps forward. The man backed away, waving a stick at the wolf. As the man and the dog backed away the wolf sat down again. It was sitting the last time the man saw it. They did not think the wolf or the dog could see each other. The wind was at their back so the wolf probably could smell them early on. Woman passed on rumour from their electrician that people at Nettle Reserve were feeding a wolf.

7925 / 7926 / 7927 BGIU: Sechart

March 30, 31, April 1 2004

On March 30, a cook was alone in camp when she heard a dog barking. She went out and saw 5 wolves 8 to 10 metres away from her dog, a male malamute / lab cross, tied to an ATCO trailer. When the cook got beside dog one of the male wolves ran forward to within 3 to 4 metres and bared its teeth. The ruff was up on its neck. The cook ran to the trailer with the dog front. A second dog, further away during the encounter, had barked but not moved. The cook put that dog away. The wolves did not leave the area but stayed at a nearby rock face less than 100 metres away for the next hour.

On March 31, the cook was alone in camp again, heard her dog barking, and saw one wolf in same position as the day before approximately 10 metres away. This wolf looked smaller and less threatening than the wolf the previous day. The cook took both dogs in again. This wolf stayed at the nearby rock face for 15 minutes.

On April 1, a similar situation occurred. The dogs and one wolf were in the same position as the previous day, 10 metres away. This wolf appeared to be non-threatening and smaller than the original. The cook's barking dog was stiff legged and would not move. Adrenaline pumping, the cook picked up her dog and carried it to trailer. The wolf left.

9577 Outside LBU: Vargas Island

June 10, 2000

A man had his dog, a small blue terrier, on a leash when two wolves ran directly towards them. The wolves ignored another man who was with them. One wolf peeled off to one side as it got closer while the other ran straight at the man and dog. The wolves came within 3 metres. The man, who had a sling shot and steel ball bearings, hit both wolves more than once from a distance of 5 metres. The wolves would not leave. Eventually, the two men were able to scare the wolves away.

P2 Behaviour

- **Person present; wolf attacks dog**

2594 Outside LBU: Landfill

January 20, 1999

An Ucluelet resident was out for a run on the landfill road with a Dalmatian and a smaller cocker spaniel when two wolves came out of the bush attacked the smaller cocker spaniel. The owner yelled which had no effect on the wolves. When he grabbed the dog, a wolf lunged at him but did not make contact.

3495 LBU: Grice Bay Road

July 7, 2002

Around 8 am, a woman and her springer spaniel left the Golf Course campground for a run down the Grice Bay Road. The dog was off leash. The woman had run all the way to the Grice Bay boat ramp and was on her way back when her dog looked tired and confused. Shortly after the woman saw a set of ears showing over the top of a rise in the road about 150 metres ahead of her. She then observed two wolves standing on the road looking towards her and her dog. One wolf looked a bit larger than other. The woman quickly decided to retrace her route and run back to the boat ramp. Her dog was between her and the wolves. When the woman glanced behind her the wolves had overtaken her dog. About 60 metres behind, one wolf had the dog on its back pinned by the throat. The dog let out one yelp. The woman yelled and screamed as she ran. Looking back again she saw the wolves and the dog on the other side of the road about two metres from where they had been a few seconds before. The dog was still and appeared to be dead. The woman continued running at a fast pace towards the boat ramp. She kept checking behind her but did not see the wolves or her dog. Upon reaching the boat ramp she found someone to give her a ride back to the campground. There was no sign of her dog on the return trip to the campground. Upon later investigation, park wardens observed 3 wolves in the area.

P3 Behaviour

- **Person not present, dog attacked**

6420 Outside LBU: location unknown

November 15, 2002

A veterinarian reported that she was awakened by a commotion around 3 am. When she went outside, she observed at least two wolves attacking her Pyrenees mountain dog. The dog was quite large and she thought would put up a good fight. The wolves ran off and she found that her dog had been killed during the attack. She reported that they generally don't have trouble from the wolves even though they have a good deal of livestock in pens and free ranging goats through the surrounding clear cuts. They have not lost any goats to wolves. Wolves do show up several times a year though there is a generally a considerable amount of time between appearances.

9097 Outside LBU: Highway 4 Ucluelet

May 29, 2002

At 4 am, a woman let her barking dog go outside. The dog was a large lab / retriever cross. When the dog was outside, she heard yelping and whimpering so she turned on the light. One wolf was on top of her dog attacking it, and two other wolves were beside it. The woman yelled and threw a flowerpot at the wolves. They ran away immediately.

2600 LBU: Compound

September 6, 2001

A man let his dog out for the evening. Shortly after he heard yipping and growls. He went out to investigate and found his dog mortally injured in the bushes behind the old gas pumps. The vet who put the dog down felt that the injuries were consistent with other wolf-injured dogs she had seen.

2633 Outside LBU: Tofino

March 1, 2000

At 5 pm, a woman heard her dog barking and yelping out back in their yard. Her husband ran outside and observed two both wolves trying to take her dog away. When the husband ran out, the wolves dropped the dog and were scared away. The dog was injured by several bites but it survived.

2628 Outside LBU: Ucluelet

January 24, 2000

A woman at the Raven Motel let her dog, a medium-sized collie cross, outside and heard yelps. When she went to investigate, the dog was gone. The next day around 10 am, a person saw a lone wolf standing directly across the road from the Raven Motel. The wolf was holding the dog that went missing the night before. When the person approached the wolf, it dropped the dog and exited into the bush. The dog had been dead for a while as the carcass was cold. Although there were bite marks the dog was intact, and there were no signs of feeding.

3544 Outside LBU: Port Albion area

June 18, 1999

A man saw his dog in his yard being dragged off by wolves. The man could hear a commotion in the dense bush, and he went into the bush with his rifle after the dog. The bush was so thick he had to crawl. He spotted wolves moving within two metres of him in the bush and saw his dog in the mouth of a wolf. He pulled the carcass away from the wolf and shot at one. He believed he hit one but did not go back to confirm.

3538 Outside LBU – Clayoquot Sound (Streetley’s cabin)

May 15, 1999

It was mid-morning when two wolves were seen attacking a small pitbull cross on the mudflats. A woman intervened by hitting the wolf with a stick however it was not immediately frightened.

2886 Outside LBU: Golf Course

March 2, 1999

A resident at the Golf Course campground let his dogs out and heard yelping so he called the dogs back. One had minor injuries. The man could see a pack of wolves just beyond edge of the street-lit area. He thought there were 9 animals.

2638 Outside LBU: Tofino

January 28, 1999

The following account from the newspaper: A woman was looking out the window when she saw her dogs running for the woods. She heard them yelping, so she ran outside and saw a wolf standing in her driveway. She ran outside and tried to chase it away by banging her rake and screaming. The wolf just looked at her. One dog suffered bites on the head and ears and had an injured leg. The other was badly bitten in the shoulders and abdomen. The woman said the dogs were not gone more than two minutes.

P4 Behaviour

- **Person is with the dog; wolf shows no aggression; wolf approaches**

7649 LBU: Greenpoint Campground

October 9, 2003

Adult female was walking with her dog (on a leash) along Greenpoint beach about 500 metres west of the rocks when she spotted two wolves about 300 metres further to the west (towards Incinerator). The wolves walked out from the drift logs and headed towards the ocean, then stopped and sniffed at kelp piles. The dog began to bark and the owner yelled at it. When the dog owner yelled, the smaller of the two wolves, which was a bit behind the larger one, turned and headed back to the drift logs and out of sight. The large wolf started moving towards the dog owner along the high tide line, stopping periodically to sniff at kelp piles. She then got out her flashlight, shined it at the

larger wolf and yelled. The wolf stopped and went back up to the drift logs and out of sight. The closest it came was about 200 metres. The observer saw neither wolf again.

3539 Outside LBU: Clayoquot Sound – Streetley’s Cabin

January 31, 2000

One wolf approached a woman and her dog on the mudflats, crossing a large open area to reach them. It approached to 20 metres. The woman and dog left quickly by canoe when it became apparent that the wolf was focused on them and was not deviating from its head on approach.

2877 LBU: Wickaninnish Southbeach

June 1, 1999

Wolves were reported chasing an unleashed dog. The dog ran out of sight into the dunes and returned shortly chased by 3 wolves. When the dog ran back to its owner, the wolves broke off the pursuit.

2599 LBU: Willowbrae Trail

May 6, 1999

A woman was walking her dog along the trail. The dog, off leash to hike up the stairs from the beach, started scenting something as the woman leashed dog for trail hike. A few minutes later, the woman looked up to see a wolf standing in middle of trail. It moved 5 metres towards them. The woman raised her arms, shouted and picked up a stick. The wolf was not intimidated and was difficult to haze off trail. The wolf stopped, looked for another minute or so then faded east into woods.

P5 Behaviour

- **Person present; wolf follows or displays ‘escort’ behaviour**

6596 LBU: Goldmine Trail

March 15, 2001

At 9 am a woman and her off leash dog started to hike down Goldmine trail. The dog, a part terrier cross, was lagging behind and stopped to defecate just before the first interpretive sign. The woman looked back and saw a wolf coming up behind the dog. She yelled and walked off a short distance. The dog then saw the wolf and ran after it. When she called the dog back it returned to her side and was put on its leash. With the wolf out of sight, the woman decided to return to the parking lot. She walked past the spot where the wolf had been and continued towards the parking lot. The wolf had not left entirely though and appeared very shortly behind her. The woman faced the wolf and yelled, waved her arms and threw things. The wolf would shy away a few steps but would then continue to follow. It maintained a distance of 3 to 4 meters until almost the at the parking lot. It seemed very intent on her and the dog but it would not approach close enough for the woman to use her pepper spray. The wolf’s tail was not raised at any time. The wolf did not make any sound. The woman did not feel particularly threatened but did feel like the wolf was trying to herd them down the trail. It was very intent and

persistent. The wolf followed them almost to the parking lot. Upon reaching her truck the woman put her dog in the back and saw that the wolf was no longer in sight.

2597 LBU: Goldmine Trail

March 20, 1999

A woman was walking with her small dog near the beach on the Goldmine Trail. When she saw the wolves, she picked up her small dog. The women screamed for several minutes and broke sticks against tree trunks. One wolf was behind her, and two wolves, one on each side, within two metres at times. The flanking wolves took turns racing by her crashing through the vegetation on either side. One would race ahead passing her on one side, then stop a ways ahead, turn around and race towards her in the forest. The wolf on the other side would do the same thing. Nothing the woman did seemed to affect the wolves. The encounter started near the beach and continued to the parking lot. The wolves were standing at parking lot edge as woman drove away.

Summary P Encounter

In P1, P2, and P3, the wolves showed some sort of aggression, which is likely exhibited towards the dog instead of the person when present. This behaviour described by McNay (2002) is “agonistic” where “aggression arises from a conflict between aggression and fear and includes most aggressive behaviours and non-aggressive ritualized behaviours related to wolf social interactions (territorial defense, rank-order interactions, sexually motivated aggression). These behaviours are often preceded by a warning or threat display.”

In P4, the wolf does not show aggression. This behaviour may be similar to C Encounter. P5 Encounters include “flanking” or “escort” behaviours similar to F Encounters.

Wolf Encounters in Areas of Human Use

EP – Encounters

19502 / 19503 BGIU: Sechart Lodge

January 1 / 5, 2006

On January 1, the cook was in kitchen of the lodge when she looked out the window and saw a wolf standing about 40 metres away looking at the lodge. It did not appear to be aware of her behind the window. The wolf continued to watch the building for two minutes and then trotted off up the trail to Cataract Lake.

On January 5, the cook saw what she thought was the same wolf out her window. The scenario was similar to the previous events.

10058 Outside LBU: Ucluelet

July 13, 2005

A wolf was observed traveling along the forest edge in backyard. It was seen for 1 minute about 20 metres away.

7992 BGIU: Turret Island

May 21, 2004

In the morning, kayakers noticed tracks that came from a forested part of the campsite down onto the beach traveling within 3 metres of the tents. The animal was not seen but there had been a sighting on the evening before two beaches to the east.

8478 BGIU: Sechart

April 29, 2004

The cook at the lodge saw a wolf from the upstairs window. She inadvertently yelled causing the animal to flee. She said that the “wolf was literally on the door step.” The wolf trotted slowly around the perimeter of the building and then into forest. There were reports of feeding at Nettle Island.

8063 BGIU: Dodd Island

March 29, 2004

A fresh scat was found near a tent. It was deposited between 11 am and 3 pm.

7718 BGIU: Sechart

December 20, 2003

A wolf walked across the lawn in front of the dining room windows of the lodge. It went around the corner of the building and stopped right under a window where the cook yelled at it. She was about 3m away from the animal. The wolf looked up and walked down to the beach out of sight of the building. A few minutes later the wolf reappeared on the lawn behind the kitchen. It just walked by and out of sight.

7717 BGIU: Sechart

December 19, 2003

A wolf walked through the dryland sort area. People and equipment were working but wolf did not seem concerned.

7534 LBU: Greenpoint Campground

September 24, 2003

As a camper unzipped his tent to use washroom, he saw two wolves flee the campsite. He did not get a good look because they took off so quickly. The wolves were approximately 3 metres away. The only thing they had left out was a soccer ball. Otherwise the site was very clean.

7650 LBU: Greenpoint Campground

August 21, 2003

Two sisters on the upper bunk of a large mobile home (about 15 metres long) looked out the window and shone a flashlight. They saw 3 pairs of eyes around the motorhome, and a fourth wolf was traveling through the campsite towards the ocean. The traveling animal had a relaxed, slow trot. The observation lasted one minute.

7714 BGIU: Gibraltar Island

August 6, 2003

In low tide, park wardens found 3 pup and 2 adult tracks on the silty mud substrate in Half Bay facing Bamfield. Their tracks indicated that they were digging in the silty lagoon foraging. All tracks were made that day since the last high tide. After the tracks were measured, 3 wolves (one adult and two pups) were viewed on Gibraltar on shoreline 50 metres to right of Gibraltar Campsite sign.

6824 LBU: Greenpoint Campground

March 18, 2003

A wolf walked around in small staff parking area in front of the kiosk, then walked into the forest by the sani-dump. The animal seemed confused. The wolf marked a tree near the kiosk and fled into the forest when it saw a truck approaching.

2648 LBU: Greenpoint Campground

October 3, 2002

A wolf was seen walking counter-clockwise down the main campground loop, heading to the bushes when was spotted by visitor. Another wolf was seen the next morning at entrance to the campground.

2572 BGIU: Clarke Island

June 2, 2002

Campers woke up to find that wolf tracks circled their tent within one metre.

3711 LBU: Greenpoint Campground

May 30, 2002

A wolf was seen running toward the walk-in campsites at Greenpoint.

2732 LBU: Greenpoint Campground

April 15, 2002

A wolf was seen and seemed unaware of the person's presence. It crossed the road and headed across the parking lot into the group campsite. The campsite was not occupied.

9728 BGIU: Sechart

January 24, 2001

The cook looked out the kitchen window and observed two wolves running across the back lawn behind lodge 50 metres away and onto trail leading to the lake. They were not aware of the cook.

3789 Outside LBU: Ucluelet

January 14, 2001

A wolf was sighted on the street in front of a house. It stepped onto the front lawn and left when yelled at. It walked off towards Big Beach.

Wolf Encounters with Vehicles or Vessels

V1 Encounter

- **The wolf appears attracted to a motorized vehicle / vessel**

15736 / 10032 BGIU: Howell Island

May 31, 2005 V1

Park staff were motoring along the shoreline of Howell and 4 wolves came out of the bush onto the open shoreline. The wolves appear to respond to the sound of the motors by coming out into open.

Later that day, a park warden visited the island in a motor boat. Once again, it appeared that the wolves came into view when they heard the sound of his engine. He hazed all 4 with a cracker pistol.

V2 Encounter

- **The wolf appears indifferent or confused when encountering a motorized vehicle / vessel**

15561 Outside LBU: Ucluelet

September 14, 2005

A woman was just leaving her house to go to work and saw a wolf. It was going down the road towards downtown (forty-five minutes earlier, she had an encounter with the same wolf: see Wildlife Observation # 15560). She followed the wolf in her car honking her horn while the wolf trotted down the center of the road. At one point she had to hit her brakes when the wolf slowed down. The horn did not seem to have any affect on the wolf. She then drove up beside the wolf, rolled down her window and yelled and clapped her hands. The wolf was almost within touching distance. Although the wolf did not act startled it did leave the road and went into the bushes.

10221 BGIU: Wouwer Island

September 3, 2005

A park warden was patrolling and watching for wolves. The tide was very low so a wide band of intertidal zone was exposed for wolf foraging. The warden spotted the wolves near the same spot where he had hazed a wolf earlier in the season. Two adult sized wolves were foraging in the intertidal and were indifferent to the boat's approach. The warden stopped the boat within 50 meters of the wolves. He used a cracker pistol that made a succession of bangs and screams to haze the wolves. They responded quickly after the first bang, ran off into the forest and did not return.

7993 BGIU: Nettle Island Reserve cabin

May 21, 2004

A motorized boat approached within 25 metres of a wolf that was foraging in the intertidal. The animal appeared indifferent to the boat. The encounter lasted about 15 minutes.

7729 LBU: Wickaninnish Southbeach

February 6, 2004

A large male wolf was standing in the middle of the road when a person in a vehicle was exiting Florencia Bay road. The person stopped and watched the wolf about 100 metres away for about 5 minutes. It stood sideways in the road looking at the truck. When the vehicle entered Wickaninnish road and drove towards the wolf, it trotted off into the forest on east side of the road. He waited for 5 minutes but the wolf did not reappear.

6828 Outside LBU: Highway #4 Ucluelet

May 21, 2003

A woman was driving home from Port Alberni when she came around an S curve and saw two cars, one in each lane, both swerving to miss a wolf on the centerline. The wolf was racing between the swerving cars trying to escape. After the cars passed the wolf went to the west side of the road into the edge of the salal and stood there. The woman pulled up and watched the wolf for about one minute. The wolf stood appearing nervous, and after 30-45 seconds it disappeared into the trees.

6417 Outside LBU: Highway #4 Ucluelet

January 26, 2003

A wolf was seen crossing Hwy #4, near the east park boundary, and stopped in the middle of the road. It was standing broadside to an on-coming vehicle and made no move to flee. The driver ended up having to swerve to miss wolf.

6406 Outside LBU: Highway #4 Ucluelet

December 27, 2002

A woman was driving past the Goldmine entrance when she saw a wolf standing on the edge of the road. She went past a short ways and pulled over to the side of the road. The wolf then trotted towards car, past it on the driver's side within two metres and continued down the centerline. The woman in the car followed the wolf at 20 metres with her 4 way flashers going. She also flashed her high beams at on-coming traffic but she did not try to scare the wolf off the road. At times there were several cars behind her car. At one point, a car approaching at a high rate of speed seemed to spook the wolf a bit. The wolf moved off the road and into the edge of the bush briefly. The woman stopped and shortly after the wolf returned to the road traveling towards Ucluelet following the centerline. After about 15 minutes the wolf left the road at the gravel pits just west of the junction and disappeared from view.

2662 Outside LBU: Highway #4

December 7, 2002

A truck came up behind a wolf on Hwy#4 about 200 metres east of the Long Beach Parking Lot turn-off. The wolf was trotting up the ocean side of the road heading towards Ucluelet. The driver stopped the truck when it was about 15 metres behind the wolf. The wolf stopped, turned around and trotted towards the truck stopping within 5 metres. Appearing confused as to what to do next, it then left the road and went out of sight into the forest.

9702 Outside LBU

January 23, 2005

A woman was rowing up an inlet at dusk when she spotted two wolves on the shoreline of a mudflat. They were about 30 metres apart. One was slightly larger than the other. When the wolves spotted the woman they ran towards her about 50 to 100 metres away. The woman and the wolves watched each other for a bit and then the woman continued on. The woman had them in sight for about 30 minutes. The wolves did not follow or vocalize.

D Encounter

6858 BGIU: Gibraltar Island

June 26, 2003

At about 5 pm, two women, in separate kayaks with two children, encountered wolves in the first lagoon on Gibraltar. A large wolf climbed up on a rock pile about 8 metres away and peered down at them. The kayakers back paddled out of the lagoon and observed the wolf. At this time they noticed another wolf, smaller in stature than the one on the rock at the back of the lagoon moving through the grass with two small pups. The wolf on the rock didn't growl or show teeth but both women felt the wolf was "saying" to stay out. The next morning the women paddled over to the area and saw the large wolf again walking through the bush.

Summary V Encounters

In V1-Encounters, the wolves appeared attracted to the vessel. Given the history of feeding wolves in the area, it is likely that these wolves were food-conditioned and habituated to the sound of approaching motorboats. In V2-Encounters, the wolves appear indifferent and/or confused when near motorized vehicles. Both V1 and V2 fall under 'Investigative Searches or Approaches' (McNay 2002).

In one case, kayakers approached wolves and pups. A wolf barked at them likely in 'Self-Defense' (McNay 2002).

CONCLUSION

The Wildlife Database contains a large dataset on carnivores and human interactions from 1983 to the present. While other data compilations may focus on “attacks”, this dataset gives an account of all reported wolf and cougar observations ranging from tracks to human contact. The majority of human encounters with cougars (64%) were categorized as close Incidental Sightings or Intentional Encounters (categories B, C and D). The majority of human encounters with wolves were in situations where the wolf was likely food conditioned (55%). Thirty-one percent involved pets (namely dogs).

The series of criteria for determining the type of wolf encounter or cougar encounter were different. The cougar flowchart was largely based on the cougar’s behaviour, while the wolf flowcharts were based on how the humans were interacting with the wolves. For example, to reach an Encounter Class outcome in the cougar flowchart, the series of questions involved what the cougar was doing (i.e. approaching, displaying threatening behaviour etc.). However, to reach an outcome in the wolf flowchart, it seemed necessary to first determine the location of the encounter (i.e. at a campsite or place where food was present, or near a potential den site if pups were present).

RECOMMENDATIONS

The Wildlife Observation Database allows park staff to enter very detailed information about carnivore encounters. However, when a carnivore sighting has been reported down several lines of communication (i.e. hiker tells trail crew who tells Info Staff who tells the Wardens who input the data) often some of this detail is inaccurate or lost. One goal of this study is to help facilitate the collection of information so that it is useful for evaluating human/wildlife conflicts and carnivore behaviour. Recommendations for the collection and organization of these data are listed below.

1. The behavioural flowcharts can be used to
 - a. facilitate interviews with the person who experienced the encounter
 - b. standardize the questions being addressed
 - c. give management a more clear assessment of the carnivore’s behaviour
2. Increase the level of training for all park staff who interview visitors regarding their encounter (i.e. make them aware of the purpose for collecting accurate, detailed information. Try to standardize staff’s “investment” to the data collection)
3. Create flowchart cards or data sheets that can be used for each initial interview
4. Separate Pet Encounters from other the existing Encounter Categories in the database. State the level of confidence regarding the positive identification of the carnivore (e.g. suspected wolf or cougar attacks on dogs could possibly be wild dogs or black bears)
5. Presently, this type of data cannot be used for assessing population numbers of carnivores due to the lack of “unit effort.” Alternative ways of collecting

encounter information could be explored in an attempt to quantify “effort”. For example, on the WCT, a specific number of hikers could be given a Wildlife Sighting and Encounter card that they fill out and hand in at the end. Or interviews of a specific number of people could be conducted at trailheads. Using these methods, the number of data collectors (i.e. hikers) is known, and the percentage of hikers experiencing a carnivore observation or encounter can be calculated.

LITERATURE CITED

Deurbrouck, J. and D. Miller. 2001. Cat Attacks: True Stories and Hard Lessons from Cougar Country. Sasquatch Book, Seattle WA.

Fitzhugh, E.L. and D.P. Fjelline. 1997. Puma behaviors during encounters with humans and appropriate human responses. pp. 26-28 in W.D. Padley, ed., Proceedings, 5th mountain lion workshop. 27 February – 1 March 1996. San Diego, California. Southern California Chapter, The Wildlife Society.

McNay, M.E. 2002. A case history of wolf-human encounters in Alaska and Canada. Alaska Department of Fish and Game. Wildlife Technical Bulletin 13.

APPENDIX

Appendix A: A list of cougar encounters including the Original Category and the Final Encounter Class after flowchart evaluation (colours indicate that the Final Encounter Class is in a new category)

Original Category (PE=people, PLE=place) Encounters	Final Encounter Class (NEI = not enough info)	Year	Wildlife Observation #
PE	A	1989	9594
PE	A	1988	9593
PLE	A	1985	9589
PE	A	1983	100
PLE	B	2006	18912
PE	B	2003	6815
PE	B	2002	3687
PE	B	2002	3861
PE	C	2006	18582
PE	C	2006	18964
PE	C	2006	18971
PE	C	2005	10055
PE	C	2003	7442
PE	C	2003	7464
PE	C	2002	2572
PE	C	2002	3778
PE	C	2002	6597
PE	C	1989	90
PE	D	2004	9551
PE	D	2003	6829
PE	D	2002	3796
PE	D	2002	3799
PE	E	2003	6606
PE	F	1988	94
PE	G	2005	10155
PE	G	1997	383
PE	H	2001	2759
PE	H	1997	9581
PLE	P	2005	10156
PLE	P	2003	6608
PE	P	2003	9735
PLE	P	2002	6598
PE	P	2002	9726
PE	P	1999	9580
PE	P	1997	2370
PLE	EP	2005	15590
PE	EP	2004	7741

PLE	EP	2004	8288
PLE	EP	2004	8946
PLE	EP	2004	9110
PLE	EP	2004	9112
PLE	EP	2004	9113
PLE	EP	2003	6801
PLE	EP	2003	7454
PE	EP	2002	2568
PLE	EP	2002	3874
PLE	EP	1993	290
PLE	EP	1993	343
PE	NEI	2006	18167
PE	NEI	2006	18955
PE	NEI	2006	18977
PE	NEI	2002	3702
PE	NEI	2002	3790
PLE	NEI	2002	3826
PLE	NEI	2002	3862
PE	NEI	2002	3873
PE	NEI	2002	3877
PE	NEI	2002	3890
PE	NEI	2000	3984
PE	NEI	2000	5552
PE	NEI	1999	3545
PE	NEI	1999	3900
PE	NEI	1999	3902
PLE	NEI	1999	3923
PE	NEI	1999	3925
PLE	NEI	1999	3934
PE	NEI	1999	3945
PE	NEI	1999	4034
PE	NEI	1999	4036
PE	NEI	1999	4037
PE	NEI	1999	9713
PLE	NEI	1999	9720
PLE	NEI	1998	9689
PE	NEI	1997	3906
PE	NEI	1997	3956
PE	NEI	1997	9582
PE	NEI	1997	9671
PLE	NEI	1997	9675
PLE	NEI	1997	9676
PLE	NEI	1997	9677
PE	NEI	1994	345
PE	NEI	1993	269
PE	NEI	1993	271
PE	NEI	1993	305
PLE	NEI	1993	308

PE	NEI	1992	2747
PE	NEI	1988	9588

Appendix B: A list of wolf encounters including the Original Category and the Final Encounter Class after flowchart evaluation (colours indicate that the Final Encounter Class is in a new category)

Original Category (PE=people, PLE=place EV=Vehicle/Vessel) Encounters	Final Encounter Class (NEI = not enough info)	Year	Wildlife Observation #
PE	A1	2000	2635
PE	A1	2000	2636
PE	A1	2000	2639
PE	A1	2000	6594
PE	A1	2000	6595
PE	A1	2003	6861
PE	A1	2004	7995
PE	A1	2004	9603
PE	A1	2004	9604
PE	A2	2004	7996
PE	A3	2000	2637
PE	A3	2000	6593
PE	C	2002	3720
PE	C	2002	3733
EV	D	2003	6858
PE	D	2003	6862
PE	D	2004	9120
PE	E	2005	10205
PE	F	1997	2602
PE	F	1999	2595
PE	F	1999	2601
PE	F	1999	6591
PE	P3	1983	1096
PE	P3	1999	2870
PE	P3	2000	3770
PE	P3	2000	3775
PE	P1	2001	2745
PE	P1	2000	9577
PE	P1	2004	7925
PE	P1	2004	7926
PE	P1	2004	7927
PE	P1	2004	9114

PE	P2	1999	2594
PE	P2	2002	3495
PE	P3	1999	2638
PE	P3	1999	2886
PE	P3	1999	3538
PE	P3	1999	3544
PE	P3	2000	2628
PE	P3	2000	2633
PE	P3	2001	2600
PE	P3	2002	6420
PE	P3	2002	9097
PE	P4	1999	2599
PE	P4	1999	2877
PE	P4	2000	3539
PE	P4	2003	7649
PE	P5	1999	2597
PE	P5	2001	6596
EV	V1	2005	10032
PE	V1	2005	10151
EV	V1	2005	15736
EV	V2	2002	2662
EV	V2	2002	6406
EV	V2	2003	6417
EV	V2	2003	6828
EV	V2	2004	7729
EV	V2	2004	7993
EV	V2	2005	9702
EV	V2	2005	10221
EV	V2	2005	15561
PE	EP	2000	2629
PLE	EP	2000	3781
PLE	EP	2000	3782
PLE	EP	2000	9691
PLE	EP	2001	3789
PLE	EP	2001	9728
PLE	EP	2002	2572
PLE	EP	2002	2648
PLE	EP	2002	2732
PE	EP	2002	2734
PLE	EP	2002	3682
PLE	EP	2002	3711
PE	EP	2002	3743
PE	EP	2002	6414
PLE	EP	2003	6824
PLE	EP	2003	7534
PLE	EP	2003	7650
PLE	EP	2003	7714

PLE	EP	2003	7717
PLE	EP	2003	7718
PLE	EP	2004	7992
PLE	EP	2004	8063
PLE	EP	2004	8478
PLE	EP	2005	10058
PE	EP	2005	10090
PE	EP	2006	19502
PE	EP	2006	19503
PE	NA	2000	3774
PE	NA	2000	6592
PE	NA	2003	9800
PE	NA	2003	9805
PE	NA	2004	8123
PE	NEI	2000	3779
PE	NEI	2000	9690
PE	NEI	2003	7658
PE	NEI	2003	9736
PE	NEI	2004	7748
PE	NEI	2004	8225
PE	NEI	2004	8479
PE	NEI	2004	9095
PE	NEI	2004	9101
PE	NEI	2004	9134
PE	NEI	2005	10026
PE	NEI	2005	15632
PE	NEI	2006	18590
PE	NEI	2006	19510
PE	OG	2002	2661
PE	OG	2004	9094
PE	OG	2005	10136
PLE	NEI	2000	3783
PLE	NEI	2001	2782
PLE	NEI	2004	9762
PLE	NEI	2005	15746
PLE	NEI	2005	18056
PLE	NEI	2005	18952
PLE	NEI	2006	18153
EV	NEI	2003	6412
EV	NEI	2005	10028
EV	NEI	2005	10029